

GENERAL ADMINISTRATION DIVISION

Report No. PH

OGDENSBURG CITY SCHOOL DISTRICT  
OGDENSBURG, NEW YORK

=====

SUBJECT: Public Hearing Relative to Proposed Revised 2020-2021 District-Wide School Safety Plan/Pandemic Response Plan

DATE: February 22, 2021

REASON FOR BOARD CONSIDERATION:

The Board of Education must approve all programs and policies within the Ogdensburg City School District.

FACTS AND ANALYSIS:

Districts are required to develop a District-Wide School Safety Plan/Pandemic Response Plan designed to prevent or minimize the effects of serious violent incidents and emergencies and to facilitate the coordination of the district with local and county resources in the event of such incidents or emergencies. At this time, the Commissioners will conduct a Public Hearing to allow citizens who may desire to speak regarding the District Wide Safety Plan/Pandemic Response Plan and the proposed revisions for 2020-2021 District Wide Safety Plan/Pandemic Response Plan.

RECOMMENDED ACTION:

Discussion only.

APPROVED FOR PRESENTATION TO THE BOARD:

  
\_\_\_\_\_  
Superintendent

KK/alf  
Attachment

# Ogdensburg City School District

## Communicable Disease - Pandemic Plan



Our District-Wide School Safety Plan is based on addressing the currently accepted phases of emergency management (Prevention/Mitigation; Protection; Response; Recovery). This concept is more simplistically defined as a way of looking at a potential emergency before, during and after the event. This Pandemic Plan is built upon the components already existing in our District-Wide School Safety Plan that also incorporates our Building-Level Emergency Response Plans. It is a flexible Plan developed in collaboration with a cross-section of the school community and public health partners and will be updated regularly to reflect current best practices. The Plan will be tested (exercised) routinely as part of the overall exercise of the District-Wide School Safety Plan. The District-Wide School Safety Team assumes responsibility for development and compliance with all provisions of this Plan and implementation at the building level through the Building-Level Emergency Response Team. **Effective April 1, 2021**, Labor Law §27-c, amends Labor Law §27-1 and adds a new provision to Education Law §2801-a. Labor Law §27-c requires public employers to develop operation plans in the event of certain declared public health emergencies. Education Law §2801-a requires school districts to develop plans consistent with the new Labor Law requirement. The new law requires public employers to prepare a plan for the continuation of operations in the event that the Governor declares a public health emergency involving a communicable disease. **Educational institutions must prepare plans consistent with Labor Law §27-c as part of their school safety plans pursuant to newly added subsection (2)(m) of Education Law §2801-a.** The Plan addresses the required components in the sections as noted below:

### Prevention/Mitigation

- (1) A list and description of positions and titles considered essential with justification for that determination.
- (2) The specific protocols that will be followed to enable non-essential employees and contractors to telecommute.
- (3) A description of how the employer will, to the extent possible, stagger work shifts of essential employees and contractors to reduce workplace and public transportation overcrowding.

### Protection/Preparedness

- (4) Protocols to be implemented to secure personal protective equipment (PPE) sufficient to supply essential workers with 2 pieces of each PPE device needed for each work shift for at least six months. This must include a plan for storage of such equipment to prevent degradation and permit immediate access in the event of an emergency declaration.

### Response

- (5) Protocols to prevent spread in the workplace in the event an employee or contractor is exposed, exhibits symptoms, or tests positive for the relevant communicable disease. Such protocols must include disinfection of the individual's work area and common areas. It must also address the policy on available leave with respect to testing, treatment, isolation or quarantine.
- (6) Protocols for documenting precise hours and work locations of essential workers for purposes of aiding in tracking the disease and identifying exposed workers in order to facilitate the provision of any benefits that may be available to them on that basis.
- (7) Protocols for coordinating with the locality to identify sites for emergency housing for essential employees to contain the spread of the disease, to the extent applicable to the needs of the workplace.

### Prevention/Mitigation:

- We will work closely with the Local County Department of Health to determine the need for activation of our Plan. The following procedures will be followed by administrators, principals, school nurses for reporting communicable disease, including Coronavirus, Influenza, etc., and communicating with the Health Department:
  - Report suspected and confirmed cases of influenza on the monthly school's *Communicable Disease Report*, (DMS-485.7/93; HE-112.4/81) and submit to: St. Lawrence County Department of Health, Bureau of Infectious Diseases.
  - Public Health Consultation and Immediate Reporting: 315-386-2325
  - *Coronavirus Hotline: 888-364-3065*
  - *Email: Kristin.VanDusen-Janz@health.ny.gov*
  - *Weekend/After-hours Consultation and Reporting: 315-386-2325*
- The County Department of Health may monitor County-wide cases of communicable disease and inform school districts as to appropriate actions.

- The St. Lawrence County Department of Health will help coordinate our Pandemic planning and response effort. The representative from the St. Lawrence County Department of Health will work closely with the District-Wide School Safety Team that has responsibility for reviewing and approving all recommendations and incorporating them into the District-Wide School Safety Plan. The school district Medical Director and nurses will be vital members of the Safety Team. Because of the potential importance of technology in the response effort (communication and notification) the school district technology director will also be an important Team member. The Human Resources Director, Business Official, Facility Director, Food Service Director, Transportation Coordinator, Public Information Officer and Curriculum Director will also be vital to the planning effort. Other non-traditional individuals may also be required to be part of the Team.
- The District-Wide School Safety Team will review and assess any obstacles to implementation of the Plan. The *CDC School District Pandemic Influenza Planning Checklist* was reviewed on **Wednesday, January 13, 2021** for this determination and has considered issues related to Planning and Coordination; Continuity of Student Learning; Core Operations; Infection Control Policies and Procedures; and Communication.
- The school district will emphasize hand-washing and cough/sneezing etiquette through educational campaigns including the CDC Germ Stopper Materials; Cover Your Cough Materials; It's a SNAP Toolkit; and the NSF Scrub Clean; which can all be accessed at <http://www.cdc.gov/flu/school/>.
- We will educate and provide information to parents, staff, and students about our Pandemic Plan and about how to make an informed decision to stay home when ill. We will utilize our website, postings and direct mailings for this purpose.

### (1) Essential Positions/Titles

In the event of a government ordered shutdown, similar to our response to the Coronavirus in the spring of 2020, we are now required to consider how we would prepare for future shutdowns that may occur. As part of our planning we are now required to provide information on those positions that would be required to be on-site or in district for us to continue to function as opposed to those positions that could realistically work remotely. The following information is addressed in the table below:

1. **Job Title/Tier** – a list of positions/titles considered essential (**could not work remotely**) in the event of a state-ordered reduction of in-person workforce.
2. **Justification** - brief description of critical responsibilities that could not be provided remotely.
3. **Number of Employees** – Number of employees for each title.

The worksheet below has been completed by each department which includes Central Administration, Human Resources, Facilities Services, Transportation, Food Service, Communications, Technology, Instructional Programs, Athletics, Special Education, Messenger/Mail Services, and Security. For the purposes of identifying essential workers, the Ogdensburg City School District has established three tiers of essential workers. Tier I encompasses any position in which all job duties must be performed fully in person, with no exceptions. Tier II includes positions in which some job duties must be performed in person, but some duties can be performed remotely. Tier III designated employees can perform all duties remotely, except for potential emergencies that must be performed in person. To maintain adequate district operations, the Superintendent may re-designate a specific job-title to the status of an essential employee.

Job Title	Tier	Justification	Qty
Assistant Principal/Athletic Director	Tier III	Non-essential unless emergency arises when students are in-person	1
Building Maintenance Worker	Tier I	Must be physically present to complete all job duties	2
Building Maintenance Mechanic	Tier I	Must be physically present to complete all job duties	2
Building Maintenance Helper	Tier I	Must be physically present to complete all job duties	4
Building Principal	Tier III	Non-essential unless emergency arises when students are in-person	5
Laborer	Tier I	Must be physically present to complete all job duties	16
Part-Time Laborer	Tier I	Must be physically present to complete all job duties	9
Director of Facilities III	Tier II	Needs to be in person for supervision and coordination of cleaning	1
Director of Special Education	Tier III	Some reporting could need to be done in person	1
District Assistant Superintendent	Tier II	State-related responsibilities, supervision of instructional operations and staff	1
District Superintendent	Tier II	State-related responsibilities, supervision of building operations and staff	1
Educational Technology Specialist/TOSA	Tier II	Continuity of remote learning technology and applications	1
School Lunch Manager	Tier I	Must be physically present to supervise employees	1

Full-Time Food Service Employee	Tier I	Must be physically present to facilitate food preparation and distribution	5
Part-Time Food Service Employee	Tier I	Must be physically present to facilitate food preparation and distribution	20
Clerk	Non-essential	Continuity of building operations as needed by supervisor	2.5
Computer Operator	Non-essential	Continuity of building operations as needed by supervisor	1
Keyboard Specialist	Non-essential	Continuity of building operations as needed by supervisor	10
Motor Vehicle Operator - 12 month	Tier I	Must be physically present to complete all job duties	1
PPS School Psychologist	Non-essential	Continuity of building operations as needed by supervisor	2
School Counselor	Non-essential	Continuity of building operations as needed by supervisor	2
Guidance Counselor	Non-essential	Prepare lessons and student instructional materials	3
Secretary to District Superintendent	Tier II	Allows for day to day operations of the district to continue	1
Secretary to District Assistant Superintendent	Tier II	Allows for day to day operations of the district to continue	1
School Nurse	Tier II	May be called upon to be physically present at anytime	5
Teacher	Non-essential	Prepare lessons and student instructional materials	126
Teaching Assistant - Classroom Special Ed	Non-essential	Prepare student materials	59

## (2) Protocols Allowing Non-Essential Employees to Telecommute

### Ensure Digital Equity for Employees

- **Mobile Device Assessments:**
  - Survey agency departmental staff to determine who will need devices at home to maintain operational functions as well as instructional services
  - Conduct a cost analysis of technology device needs
- **Internet Access Assessments:**
  - Survey agency departmental staff to determine the availability of viable existing at-home Internet service
  - Conduct a cost analysis of Internet access needs
- **Providing Mobile Devices and Internet Access:**
  - To the extent practicable, decide upon, develop procurement processes for, order, configure, and distribute, if and when available, appropriate mobile devices to those determined to be in need.
  - To the extent practicable and technically possible, decide upon, develop procurement processes for, and when available, provide appropriate Internet bandwidth to those determined to be in need. WIFI hotspots and residential commercial Internet options will be evaluated for anticipated effectiveness in particular situations.

### Technology & Connectivity for Students - Mandatory Requirements:

- To the extent possible, have knowledge of the level of access to devices and high-speed broadband all students and teachers have in their places of residence;
- To the extent practicable, address the need to provide devices and internet access to students and teachers who currently do not have sufficient access; and
- Provide multiple ways for students to participate in learning and demonstrate mastery of Learning Standards in remote or blended models, especially if all students do not yet have sufficient access to devices and/or high-speed internet.

### Mobile Devices Delivery:

Technology offers schools and districts increased options for continuing learning during extended closures. Technology can be leveraged in different ways to meet local needs, including but not limited to:

- Communication (e-mail, phone, online conferencing, social media)
- Teacher/student and student/student interaction (office hours, check-ins, peer collaboration)
- Instruction (video/audio recordings of instruction, instructional materials, synchronous distance learning, asynchronous online courses)
- Learning Materials and Content (digital content, online learning activities)
- Additional Technology Devices Assessments:

- Identify students' technology needs to include adaptive technologies
- Use the Asset Tracking Management System procedures to check out all mobile devices
- If a shutdown happens abruptly, plan a pick-up time and location, and arrange to deliver devices to those who cannot pick them up.
- Providing Multiple Ways for Students to Learn
  - Support instructional programs as needed in preparation of non-digital, alternative ways for students to participate in learning and demonstrate mastery of Learning Standards in remote or blended models in circumstances in which students do not yet have sufficient access to devices and/or high-speed internet.

### **(3) Staggering Work Shifts of Essential Employees – Reducing Overcrowding**

Depending on the exact nature of the communicable disease and its impact, the district is prepared to enact numerous strategies to reduce traffic congestion and maintain social distancing requirements in order to minimize building occupancy. The following will be considered:

- Limiting building occupancy to 25%, 50% or 75% of capacity or the maximum allowable by State or Local guidance.
- Forming employee work shift cohorts to limit potential contacts.
- Limit employee travel within the building.
- Limit restroom usage to specific work areas.
- Stagger arrival and dismissal times.
- Alternate work-days or work weeks.
- Implement a four-day work week.
- Limit or eliminate visitors to the building.

The Ogdensburg City School District will utilize these base strategies and expand upon them as necessary in order to address any public health emergency.

### **Protection (Preparedness):**

We have collaborated with our partners to assure complementary efforts. We have invited representatives from the County Department of Health, Police Department, Office of Emergency Management, Department of Mental Health and others to attend our District-wide School Safety Team meetings. This will allow us to send consistent messages to the school community on pandemic related issues.

- The District-wide Command Center will be at **Ogdensburg Free Academy** with the alternate at **John F. Kennedy Elementary School** and will be activated at the direction of the School District Incident Commander. We have established our District-wide Incident Command Structure as follows:

○ Kevin K. Kendall	<b>Superintendent of Schools</b>	<b>315-229-2277</b>
○ Jacquelyn L. Kelly	<b>Assistant Superintendent</b>	<b>315-229-2083</b>
○ Christopher Kirwan	<b>Director of Facilities</b>	<b>845-222-7352</b>
○ Cynthia Tuttle	<b>Principal, Grades 9-12</b>	<b>315-393-0900</b>
○ David Price	<b>Principal, Grades 7/8</b>	<b>315-393-0900</b>
○ SueEllen Bouchard	<b>JFK Principal, Grades 3-6</b>	<b>315-393-4264</b>
○ Christina Frank	<b>JFK Principal, Grades UPK-2</b>	<b>315-393-4264</b>
○ Amy DiSalvo	<b>Madill School Principal</b>	<b>315-393-7729</b>
○ Tara Kroeger	<b>District Head Nurse</b>	<b>315-393-4264</b>

Building-level Command Posts and Incident Command Structures are defined in the Building-Level Emergency Response Plans. Our Incident Command System will complement and work in concert with the Federal, State, and Local Command Systems. Our central administrators and school building principals have completed both the IS 100 (Introduction to Incident Command) IS 362 (Multi-Hazard Emergency Planning for Schools) and IS 700 (National Incident Management System) training courses that are available on-line through the FEMA website (<https://www.fema.gov/>). We are also recommending that all District-wide School Safety Team members, administrators, principals, nurses and others take the Johns Hopkins University COVID-19 Contact Tracing Course which is offered free-of-charge at <https://www.coursera.org/learn/covid-19-contact-tracing>.

- The school district has designated a COVID-19 safety coordinator (administrator), for each of its schools, whose responsibilities include continuous compliance with all aspects of the school's reopening plan, as well as any phased-in reopening activities necessary to allow for operational issues to be resolved before activities return to normal or "new normal" levels. The coordinators shall be the main contact upon the identification of positive COVID-19 cases and are responsible for subsequent communication. Coordinators shall be responsible for answering questions from students, faculty, staff, and parents or legal guardians of students regarding the COVID-19 public health emergency and plans implemented by the school.

<i>School/Program</i>	<i>COVID-19 Safety Coordinator/Administrator</i>	<i>Contact #</i>
<i>Ogdensburg Free Academy</i>	<i>Cynthia Tuttle, Principal</i>	<i>315-393-0900</i>
<i>John F. Kennedy Elementary School</i>	<i>SueEllen Bouchard, Principal</i>	<i>315-393-4264</i>
<i>Grant C. Madill Elementary School</i>	<i>Amy DiSalvo, Principal</i>	<i>315-393-7729</i>

- Communication will be important throughout a pandemic outbreak. It will be necessary to communicate with parents, students, staff, and the school community. Communication methods may include; websites; school postings; general mailings; e-mails; special presentations; phones and cell phones, texting; reverse 911 systems, and the public media. A school district Public Information Officer (PIO) Kevin K. Kendall has been designated to coordinate this effort and act as the central point for all communication. The PIO will also retain responsibility for establishing and maintaining contact with accepted media partners. The PIO will work closely with our Technology Director to assure proper function of all communication systems. This coordination will also help assure that as many redundant communication systems as possible are available.
- Continuity of operations and business office function could be severely impacted by a loss of staff. As such, our plan will include procedures for maintaining essential functions and services. This will include:
  - Overall Operations – we have defined the following decision-making authority for the district. The Superintendent, Assistant Superintendent, High School Principal, and the Director of Facilities shall make up the district decision-making authority. Recognizing the need for these essential individuals to have frequent communication we have established as many redundant communication systems as possible. Our primary communication will be through our normal phone system followed by hand-held radios, cell phones, and district e-mail.
  - The Business Office is essential for maintaining overall function and facilities operation. Back-up personnel will be important to maintain purchasing and payroll responsibilities.
  - Maintenance of facilities will be difficult with a reduced or absent maintenance staff. The Director of Facilities or back-up designee will keep the business office informed of such status and of the point at which buildings can no longer be maintained. The Director of Facilities has provided building administrators with procedures for maintaining essential building functions (HVAC system operation, alarms, security, etc. along with a list of telephone numbers of outside companies and alternates for repair and maintenance of these systems). If necessary, we will pool maintenance staff to form a mobile central team to help assist in essential building function and cleaning of critical areas such as bathrooms. Teachers may be asked to assist in this effort. If necessary, we may provide spray bottle sanitizers for each classroom teacher for doorknob and desktop disinfection only. Desktops will be misted with the provided disinfectant and left to dry. Training for teachers on this process was provided on **September 1, 2020**. *At no time will products not approved by the school district be utilized.*
  - The Superintendent or Assistant Superintendent will be essential in monitoring absenteeism and assuring appropriate delegation of authority. Changes to district policies and procedures to reflect crisis response may become necessary and will be implemented by The Superintendent or Assistant Superintendent. District Administration will help develop the Plan, in conjunction with all bargaining units, for emergency use of personnel in non-traditional functions and changes in the normal work-day such as alternate or reduced work hours, working from home, etc. Working with administration and local officials, the Human Resources Department will help to decide if schools need to be closed.
  - Continuity of instruction will need to be considered in the event of significant absences or school closure. Restructuring of the school calendar may become necessary. We will work closely with the New York State Education Department on this potential result throughout the crisis period.
  - Hard copy, self-directed lessons
  - Use of mobile media storage devices for lessons (CDs, Jump Drives, iPads)
  - On-line instruction; on-line resources; on-line textbooks

- Communication modalities for assignment postings and follow-up: telephone; Postal Service; cell phone, cell phone mail, text messages; e-mail; automated notification systems; website postings

#### (4) Obtaining and Storing Personal Protective Equipment (PPE)

##### PPE & Face Covering Availability:

- The school district will provide employees with an acceptable face covering at no-cost to the employee and have an adequate supply of coverings in case of replacement.
- Cloth face coverings are meant to protect other people in case the wearer is unknowingly infected (many people carry COVID-19 but do not have symptoms).
- Cloth face coverings are not surgical masks, respirators, or personal protective equipment.
- Information should be provided to staff and students on proper use, removal, and washing of cloth face coverings.
- Masks are required at all times, with the exception of scheduled mask breaks, i.e. meals.
- Procurement, other than some very basic preliminary purchases will be done on a consolidated basis to ensure that the Agency is getting the most for its PPE dollars.
- Teach and reinforce use of face coverings among all staff.
- We have encouraged all staff to utilize their own personal face coverings but have secured and will provide PPE for any employee requesting such protection. Specialized PPE (N95s, face shields, gowns, gloves, etc.) may be required for specific work tasks and will be provided as deemed necessary. Those individuals that are required to wear N-95 respirators will be fit-tested and medically screened prior to use to assure they are physically able to do so. We will work in partnership with the Health and Safety Office of Jefferson Lewis BOCES to provide this capability. Parents will also be encouraged to provide face coverings for students however, face coverings will be provided for any student that cannot provide their own.

##### PPE Supply Management

- The Facilities Department is working with programs to determine the overall PPE needs of the Agency. Centralized purchasing will be used when possible.

Disposable Face Covering Supplies					
Group	Quantity per 100 per Group	12 Week Supply 100% Attendance	12 Week Supply 50% Attendance	12 Week Supply 25% Attendance	Assumptions
Students	100 Masks per Week	1200	600	300	1 Disposable Mask per Week per Student (supplements parent provided)
Teachers/Staff	500	6000	3000	1500	5 Disposable Masks per Week per Teacher
Nurse/Health Staff	1000	12,000	6000	3000	10 Disposable Masks per Week per School Nurse

PPE for High Intensity Contact with Students			
Item	1 Week Supply for 1 Staff	12 Week Supply	Assumptions
Disposable Nitrile Gloves	10	120	10 per Week per Staff
Disposable Gowns	10	120	10 per Week per Staff
Eye Protection	2	n/a	2 Re-usable per Staff
Face Shields	2	n/a	2 Re-usable per Staff



Waste Disposal Medium	1	n/a	1 Unit per Staff Total
N-95 Respirators*	10	120	10 per Week per Staff

***\*Note:** N-95 respirators are recommended only if staff will be in contact with a suspected COVID-19 positive case and/or aerosol-generating procedure. Those employees required to wear N-95 respirators will need to be fit tested and medically evaluated in order to determine if the employees are capable of wearing an N-95 respirator without impacting health.*

## **Response:**

The District-Wide School Safety Team will meet to determine the need for activation of a pandemic response based on internal monitoring and correspondence with the County Department of Health and other experts. Each Building-Level Emergency Response Team will be informed that the Plan has been activated.

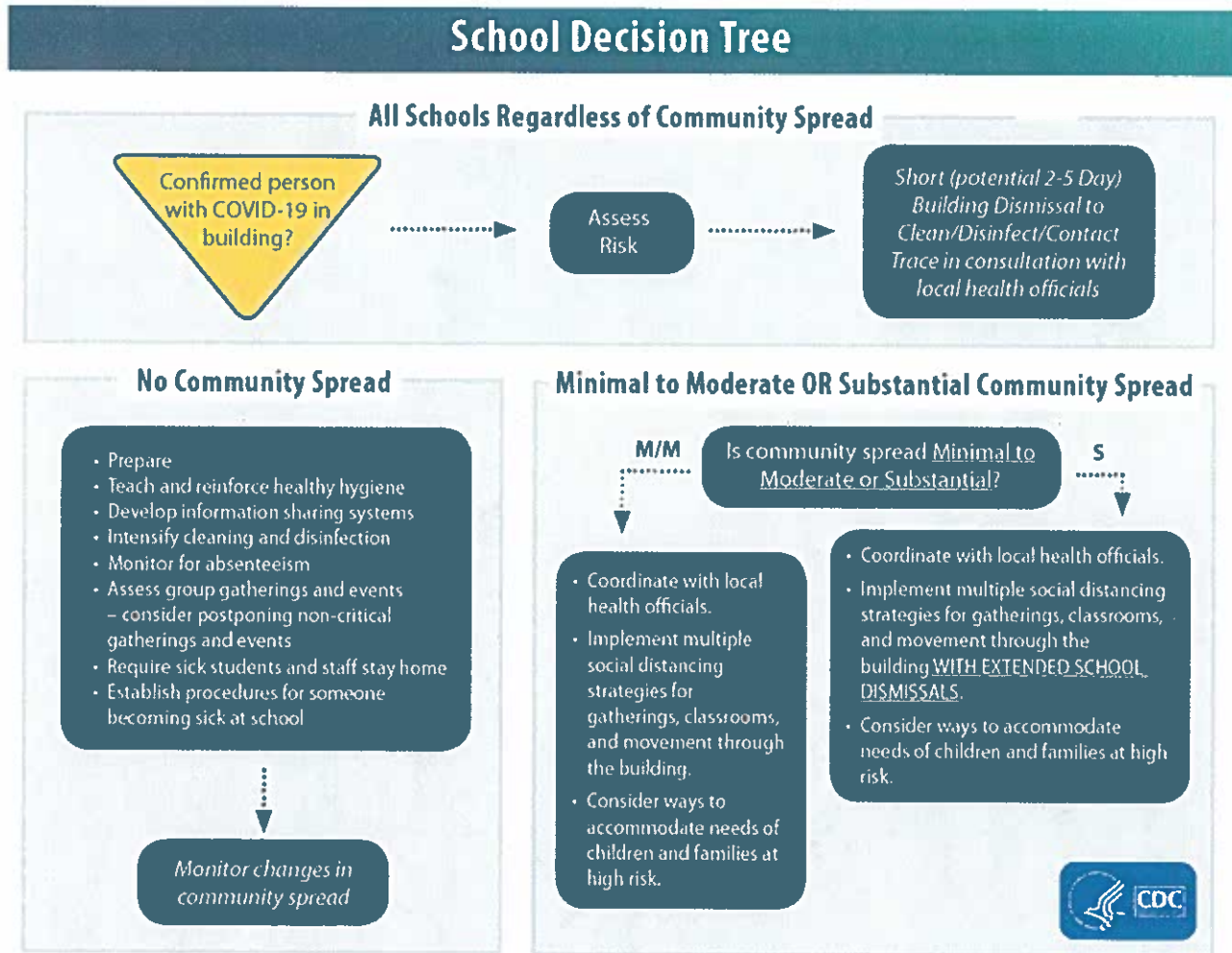
- The entire Incident Command Structure at both the District and Building level will be informed that the response effort has been enacted. These individuals will meet to discuss the Plan's activation and review responsibilities and communication procedures.
- The PIO will work closely with the Technology Director to re-test all communication systems to assure proper function. The District-wide School Safety Team and Building-Level Emergency Response Teams will assist in this effort.
- Based on the latest information from collaboration with our partners, and to send a message consistent with public health authorities, the PIO will utilize the communication methods previously described to alert the school community of the activation of our District-Wide School Safety Plan as it specifically applies to pandemics.
- The Business Official will meet with staff to review essential functions and responsibilities of back-up personnel. Ability to utilize off-site systems will be tested. The Business Official will monitor utilization of supplies, equipment, contracts, and provided services and adjust as necessary.
- The Facility Director will meet with staff and monitor ability to maintain essential function. The Facility Director will review essential building function procedures with the Principal and command chain. Sanitizing procedures will be reviewed with teachers. The Facility Director will work closely with the Business Official or designee to implement different phases of the Plan as necessary.
- The Human Resources Director will meet with staff to review essential functions and responsibilities of back-up personnel. The Human Resources Director will monitor absenteeism to assure maintenance of the Command Structure and possible need to amend existing procedures.
- Based on recommendations from Local and State Authorities, schools may be closed. Our Plan for continuity of instruction will be implemented as previously described.
- **If the decision is made to close a school building the school district will notify the NYS Education Department and District Superintendent at the local BOCES.**



## (5) Preventing Spread, Contact Tracing and Disinfection

### Confirmed COVID-19 Case Requirements & Protocols

Instructional programs must be prepared for COVID-19 outbreaks in their local communities and for individual exposure events to occur in their facilities, regardless of the level of community transmission. CDC has provided the following decision tree to help schools determine which set of mitigation strategies may be most appropriate for their current situation:



### CDC and NYSDOH Recommendations:

- Closing off areas used by a sick person and not using these areas until after cleaning and disinfection has occurred;
- Opening outside doors and windows to increase air circulation in the area.
- Waiting at least 24 hours before cleaning and disinfection. If waiting 24 hours is not feasible, wait as long as possible;
- Clean and disinfect all areas used by the person suspected or confirmed to have COVID-19, such as offices, classrooms, bathrooms, lockers, and common areas.
- Once the area has been appropriately cleaned and disinfected it can be reopened for use.
- Individuals without close or proximate contact with the person suspected or confirmed to have COVID-19 can return to the area and resume school activities immediately after cleaning and disinfection.

- Refer to DOH's [Interim Guidance for Public and Private Employees Returning to Work Following COVID-19 Infection or Exposure](#) for information on "close and proximate" contacts.
- If more than seven days have passed since the person who is suspected or confirmed to have COVID-19 visited or used the facility, additional cleaning or disinfection is not necessary, but routine cleaning and disinfection should continue.

#### **Return to School After Illness:**

Schools must follow CDC guidance for allowing a student or staff member to return to school after exhibiting symptoms of COVID-19. If a person is not diagnosed by a healthcare provider (physician, nurse practitioner, or physician assistant) with COVID-19 they can return to school:

- Once there is no fever, without the use of fever reducing medicines, and they have felt well for 24 hours;
- If they have been diagnosed with another condition and have a healthcare provider written note stating that they are clear to return to school.

If a person is diagnosed with COVID-19 by a healthcare provider based on a test or their symptoms or does not get a COVID-19 test but has had symptoms, they should not be at school and should stay at home until:

- It has been at least ten days since the individual first had symptoms;
- It has been at least three days since the individual has had a fever (without using fever reducing medicine); and
- It has been at least three days since the individual's symptoms improved, including cough and shortness of breath.

The CDC provides specific guidance for individuals who are on home isolation regarding when the isolation may end. [Discontinuation of Isolation for Persons with COVID-19 Not in Healthcare Settings](#).

CDC recommendations for discontinuing isolation in persons known to be infected with COVID-19 could, in some circumstances, appear to conflict with recommendations on when to discontinue quarantine for persons known to have been exposed to COVID-19. CDC recommends 14 days of quarantine after exposure based on the time it may take to develop illness if infected. Thus, it is possible that a person known to be infected could leave isolation earlier than a person who is quarantined because of the possibility they are infected.

#### **Staff Absenteeism**

- Instructional staff will call into the substitute service when they are absent due to illness. Substitutes will be provided as necessary and as requested.\* or whatever type system you utilize district wide.

#### **Medical Accommodations**

- The Superintendent of Schools will continue to handle medical and COVID-19 accommodations. Requests for COVID-19 accommodations should be sent to Mrs. Alane Farrell, Secretary to the Superintendent.

#### **New York State Contact Tracing Program**

If a student or staff member tests positive for Coronavirus the New York State Contact Tracing Program will be implemented. As such, it is important for everyone to understand how contact tracing works. The information below is provided by the New York State Contact Tracing Program:

New York State has partnered with Bloomberg Philanthropies, Johns Hopkins Bloomberg School of Public Health and Vital Strategies to create the NYS Contact Tracing Program, a nation-leading initiative to help slow the spread of COVID-19 and make it safer to begin to return to normal again.

Contact Tracers work with people who have tested positive for COVID-19 to identify people they have had contact with and let them know they may have been exposed to the disease.

**If you get a call from “NYS Contact Tracing” (518-387-9993), PLEASE answer the phone.** Answering the phone will keep your loved ones and community safe.

**A contact tracer will:**

- NEVER ask for your Social Security number
- NEVER ask for any private financial information
- NEVER ask for credit card information
- NEVER send you a link without proper authentication procedures

If you test positive, a COVID Contact Tracer will connect you with the support and resources you may need through quarantine, such as help getting groceries or household supplies, child-care, medical care or supplies. The Tracer will work with you to identify and reach out via phone and text to anyone you’ve been in contact with while you were infectious to trace and contain the spread of the virus.

People who have come in close contact with someone who is positive are asked to stay home and limit their contact with others. By staying home during this time, IF you become sick yourself, you have not infected many others along the way. This is how we stop the spread!

Testing, medical and quarantine support for yourself and your loved ones will be arranged. We will not release your name to anyone. Your information is strictly confidential and will be treated as a private medical record. This nation-leading program will place emphasis on areas with the highest rates of infection and on regions ready to open. The program will operate through the next flu season. It will be implemented in coordination with New Jersey and Connecticut.

Your caller ID will say “NYS Contact Tracing” (518-387-9993).

Please answer the phone so we can keep NY moving forward and stop the spread of COVID-1

### **Facilities: Cleaning and Sanitizing**

Cleaning removes germs, dirt, and impurities from surfaces or objects. Cleaning works by using soap (or detergent) and water to physically remove germs from surfaces. This process does not necessarily kill germs, but by removing them, it lowers their numbers and the risk of spreading infection. Visibly soiled surfaces and objects must be cleaned first. If surfaces or objects are soiled with body fluids or blood, use gloves and other standard precautions to avoid coming into contact with the fluid. Remove the spill, and then clean and disinfect the surface.

Sanitizing lowers the number of germs on surfaces or objects to a safe level, as judged by public health standards or requirements. This process works by either cleaning or disinfecting surfaces or objects to lower the risk of spreading infection.

**Routine cleaning of school settings includes:**

- Cleaning high contact surfaces that are touched by many different people, such as light switches, handrails and doorknobs/handles
- Dust- and wet-mopping or auto-scrubbing floors
- Vacuuming of entryways and high traffic areas
- Removing trash
- Cleaning restrooms
- Wiping heat and air conditioner vents
- Spot cleaning walls
- Spot cleaning carpets
- Dusting horizontal surfaces and light fixtures
- Cleaning spills

**Classroom/Therapy Rooms:**

The district will provide related service providers with additional cleaning supplies to ensure continuous disinfecting of classrooms and therapy rooms that service students with complex disabilities where multiple tools are used for communication, mobility, and instruction.

**Common Areas:**

Smaller common areas, like kitchenettes and copy room areas, should have staggered use. If users cannot maintain six feet of distance, they shall wear a mask. Signage should be posted in common areas to remind staff of health and safety etiquette.

**Disinfecting:**

Disinfecting kills germs on surfaces or objects by using chemicals to kill germs on surfaces or objects. This process does not necessarily clean dirty surfaces or remove germs, but by killing germs on a surface after cleaning, it can further lower the risk of spreading infection.

- Cleaning and disinfection requirements from the Centers for Disease Control and Prevention (CDC) and the Department of Health will be adhered to.
- Custodial logs will be maintained that include the date, time and scope of cleaning and disinfection. Cleaning and disinfection frequency will be identified for each facility type and responsibilities will be assigned.
- Hand hygiene stations will be provided and maintained, including handwashing with soap, running warm water, and disposable paper towels, as well as an alcohol-based hand sanitizer containing 60% or more alcohol for areas where handwashing is not feasible.
- Regular cleaning and disinfection of facilities and more frequent cleaning and disinfection for high-risk areas used by many individuals and for frequently touched surfaces, including desks and cafeteria tables will be conducted.
- Regular cleaning and disinfection of restrooms will be performed.
- Cleaning and disinfection of exposed areas will be performed in the event an individual is confirmed to have COVID-19, with such cleaning and disinfection to include, at a minimum, all heavy transit areas and high-touch surfaces.
- Although cleaning and disinfection is primarily a custodial responsibility, appropriate cleaning and disinfection supplies will be provided to faculty and staff as approved by Central Administration.
- Additional paper towel dispensers may be installed in other designated spaces.

Upon request, Facilities Services will provide CDC approved disinfecting solutions for additional on the spot disinfecting. This should be done daily or between use as much as possible. Examples of frequently touched areas in schools may include:

- Bus seats and handrails.
- Buttons on vending machines and elevators.
- Changing tables.
- Classroom desks and chairs.
- Door handles and push plates.
- Handles on equipment (e.g., athletic equipment).
- Handrails.
- Dance studio floors.
- Kitchen and bathroom faucets.
- Light switches.
- Lunchroom tables and chairs.
- Positive Academic Support Solution (PASS) Rooms.
- Related Services Spaces.
- Shared computer or piano keyboards and mice.
- Shared desktops.
- Shared telephones.

**Hand Sanitizing:**

- Hand sanitizer dispensers will be located and installed in approved locations.
- Hand sanitizer bottles will be distributed to staff as approved by Central Administration.
- The district will ensure that all existing and new alcohol-based hand-rub dispensers, installed in any location, are in accordance with the Fire Code of New York State (FCNYS) 2020 Section 5705.5.

**Trash removal:**

- Trash will be removed daily.
- Garbage cans or process for collecting trash during lunch periods in classrooms will be increased where necessary.

- No-touch trash receptacles will be utilized, where possible.

## **(6) Documenting Precise Hours/Work Locations of Essential Workers**

It is recognized that as the work environment changes to adapt to the emergency situation and typical work schedules are modified it can become more difficult to track employees especially if they conduct work off site or in numerous locations. The ability to identify these individuals will be extremely important if contact tracing is necessary during a communicable disease crisis.

## **(7) Emergency Housing for Essential Employees**

In the event that an essential employee is in need of emergency housing, the Ogdensburg City School District will refer the employee to the appropriate public health contact who will secure available emergency housing. When necessary, the district will communicate with local public health officials to identify the employee as an essential worker.

If it is necessary for the school district to establish school building shelter sites, the district will work in cooperation with the County Office of Emergency Management which may be utilized in the event of any emergency situation. If deemed necessary, school districts will work closely with Office of Emergency Management to determine housing options.

### **Recovery:**

- Re-establishing the normal school curriculum is essential to the recovery process and should occur as soon as possible. We will work toward a smooth transition from the existing learning methods to our normal process. We will use all described communication methods and our PIO to keep the school community aware of the transition process.
- We will work closely with the New York State Education Department to revise or amend the school calendar as deemed appropriate.
- We will evaluate all building operations for normal function and re-implement appropriate maintenance and cleaning procedures.
- Each Building-Level Post-incident Response Team will assess the emotional impact of the crisis on students and staff and make recommendations for appropriate intervention.
- The District-Wide School Safety Team and Building-Level Emergency Response Teams will meet to de-brief and determine lessons learned. Information from the PIO, Business Office, Human Resources, Facility Director, and Curriculum Supervisor will be vital to this effort. The District-Wide School Safety Plan and Building-Level Emergency Response Plans will be revised to reflect this.
- Curriculum activities that may address the crisis will be developed and implemented.

## **APPENDIX A**

**School District Pandemic Influenza Planning Checklist (page 14 )**

**Flowcharts for COVID-19 Decision Making (page 17)**

## SCHOOL DISTRICT (K-12) PANDEMIC INFLUENZA PLANNING CHECKLIST



Local educational agencies (LEAs) play an integral role in protecting the health and safety of their district's staff, students and their families. The Department of Health and Human Services (HHS) and the Centers for Disease Control and Prevention (CDC) have developed the following checklist to assist LEAs in developing and/or improving plans to prepare for and respond to an influenza pandemic.

Building a strong relationship with the local health department is critical for developing a meaningful plan. The key planning activities in this checklist build upon existing contingency plans recommended for school districts by the U.S. Department of Education (Practical Information on Crisis Planning: A Guide For Schools and Communities <http://www.ed.gov/admins/lead/safety/emergencyplan/crisisplanning.pdf>).

Further information on pandemic influenza can be found at [www.pandemicflu.gov](http://www.pandemicflu.gov).

### I. Planning and Coordination:

Completed	In Progress	Not Started	
<input type="checkbox"/>	<input type="checkbox"/>	<input type="checkbox"/>	Identify the authority responsible for declaring a public health emergency at the state and local levels and for officially activating the district's pandemic influenza response plan.
<input type="checkbox"/>	<input type="checkbox"/>	<input type="checkbox"/>	Identify for all stakeholders the legal authorities responsible for executing the community operational plan, especially those authorities responsible for case identification, isolation, quarantine, movement restriction, healthcare services, emergency care, and mutual aid.
<input type="checkbox"/>	<input type="checkbox"/>	<input type="checkbox"/>	As part of the district's crisis management plan, address pandemic influenza preparedness, involving all relevant stakeholders in the district (e.g., lead emergency response agency, district administrators, local public health representatives, school health and mental health professionals, teachers, food services director, and parent representatives). This committee is accountable for articulating strategic priorities and overseeing the development of the district's operational pandemic plan.
<input type="checkbox"/>	<input type="checkbox"/>	<input type="checkbox"/>	Work with local and/or state health departments and other community partners to establish organizational structures, such as the Incident Command System, to manage the execution of the district's pandemic flu plan. An Incident Command System, or ICS, is a standardized organization structure that establishes a line of authority and common terminology and procedures to be followed in response to an incident. Ensure compatibility between the district's established ICS and the local/state health department's and state education department's ICS.
<input type="checkbox"/>	<input type="checkbox"/>	<input type="checkbox"/>	Delineate accountability and responsibility as well as resources for key stakeholders engaged in planning and executing specific components of the operational plan. Assure that the plan includes timelines, deliverables, and performance measures.
<input type="checkbox"/>	<input type="checkbox"/>	<input type="checkbox"/>	Work with your local and/or state health department and state education agencies to coordinate with their pandemic plans. Assure that pandemic planning is coordinated with the community's pandemic plan as well as the state department of education's plan.
<input type="checkbox"/>	<input type="checkbox"/>	<input type="checkbox"/>	Test the linkages between the district's Incident Command System and the local/state health department's and state education department's Incident Command System.
<input type="checkbox"/>	<input type="checkbox"/>	<input type="checkbox"/>	Contribute to the local health department's operational plan for surge capacity of healthcare and other services to meet the needs of the community (e.g., schools designated as contingency hospitals, schools feeding vulnerable populations, community utilizing LEA's healthcare and mental health staff). In an affected community, at least two pandemic disease waves (about 6-8 weeks each) are likely over several months.
<input type="checkbox"/>	<input type="checkbox"/>	<input type="checkbox"/>	Incorporate into the pandemic influenza plan the requirements of students with special needs (e.g., low income students who rely on the school food service for daily meals), those in special facilities (e.g., juvenile justice facilities) as well as those who do not speak English as their first language.
<input type="checkbox"/>	<input type="checkbox"/>	<input type="checkbox"/>	Participate in exercises of the community's pandemic plan.
<input type="checkbox"/>	<input type="checkbox"/>	<input type="checkbox"/>	Work with the local health department to address provision of psychosocial support services for the staff, students and their families during and after a pandemic.



### 1. Planning and Coordination (cont.):

Completed	In Progress	Not Started	
<input type="checkbox"/>	<input type="checkbox"/>	<input type="checkbox"/>	Consider developing in concert with the local health department a surveillance system that would alert the local health department to a substantial increase in absenteeism among students.
<input type="checkbox"/>	<input type="checkbox"/>	<input type="checkbox"/>	Implement an exercise/drill to test your pandemic plan and revise it periodically.
<input type="checkbox"/>	<input type="checkbox"/>	<input type="checkbox"/>	Share what you have learned from developing your preparedness and response plan with other LEAs as well as private schools within the community to improve community response efforts.

### 2. Continuity of Student Learning and Core Operations:

Completed	In Progress	Not Started	
<input type="checkbox"/>	<input type="checkbox"/>	<input type="checkbox"/>	Develop scenarios describing the potential impact of a pandemic on student learning (e.g., student and staff absences), school closings, and extracurricular activities based on having various levels of illness among students and staff.
<input type="checkbox"/>	<input type="checkbox"/>	<input type="checkbox"/>	Develop alternative procedures to assure continuity of instruction (e.g., web-based distance instruction, telephone trees, mailed lessons and assignments, instruction via local radio or television stations) in the event of district school closures.
<input type="checkbox"/>	<input type="checkbox"/>	<input type="checkbox"/>	Develop a continuity of operations plan for essential central office functions including payroll and ongoing communication with students and parents.

### 3. Infection Control Policies and Procedures:

Completed	In Progress	Not Started	
<input type="checkbox"/>	<input type="checkbox"/>	<input type="checkbox"/>	Work with the local health department to implement effective infection prevention policies and procedures that help limit the spread of influenza at schools in the district (e.g. promotion of hand hygiene, cough/sneeze etiquette). Make good hygiene a habit now in order to help protect children from many infectious diseases such as flu.
<input type="checkbox"/>	<input type="checkbox"/>	<input type="checkbox"/>	Provide sufficient and accessible infection prevention supplies (e.g., soap, alcohol-based/waterless hand hygiene products, tissues and receptacles for their disposal).
<input type="checkbox"/>	<input type="checkbox"/>	<input type="checkbox"/>	Establish policies and procedures for students and staff sick leave absences unique to a pandemic influenza (e.g., non-punitive, liberal leave).
<input type="checkbox"/>	<input type="checkbox"/>	<input type="checkbox"/>	Establish sick leave policies for staff and students suspected to be ill or who become ill at school. Staff and students with known or suspected pandemic influenza should not remain at school and should return only after their symptoms resolve and they are physically ready to return to school.
<input type="checkbox"/>	<input type="checkbox"/>	<input type="checkbox"/>	Establish policies for transporting ill students.
<input type="checkbox"/>	<input type="checkbox"/>	<input type="checkbox"/>	Assure that the LEA pandemic plan for school-based health facilities conforms to those recommended for health care settings (Refer to <a href="http://www.hhs.gov/pandemicflu/plan">www.hhs.gov/pandemicflu/plan</a> ).

### 4. Communications Planning:

Completed	In Progress	Not Started	
<input type="checkbox"/>	<input type="checkbox"/>	<input type="checkbox"/>	Assess readiness to meet communication needs in preparation for an influenza pandemic, including regular review, testing, and updating of communication plans.
<input type="checkbox"/>	<input type="checkbox"/>	<input type="checkbox"/>	Develop a dissemination plan for communication with staff, students, and families, including lead spokespersons and links to other communication networks.
<input type="checkbox"/>	<input type="checkbox"/>	<input type="checkbox"/>	Ensure language, culture and reading level appropriateness in communications by including community leaders representing different language and/or ethnic groups on the planning committee, asking for their participation both in document planning and the dissemination of public health messages within their communities.

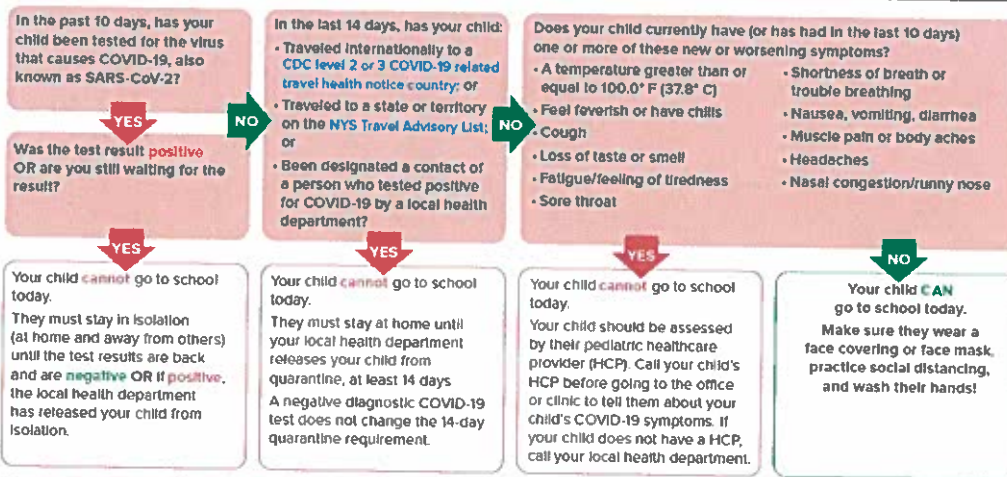
#### 4. Communications Planning (cont.):

Completed	In Progress	Not Started	
<input type="checkbox"/>	<input type="checkbox"/>	<input type="checkbox"/>	Develop and test platforms (e.g., hotlines, telephone trees, dedicated websites, and local radio or TV stations) for communicating pandemic status and actions to school district staff, students, and families.
<input type="checkbox"/>	<input type="checkbox"/>	<input type="checkbox"/>	Develop and maintain up-to-date communications contacts of key public health and education stakeholders and use the network to provide regular updates as the influenza pandemic unfolds.
<input type="checkbox"/>	<input type="checkbox"/>	<input type="checkbox"/>	Assure the provision of redundant communication systems/channels that allow for the expedited transmission and receipt of information.
<input type="checkbox"/>	<input type="checkbox"/>	<input type="checkbox"/>	Advise district staff, students and families where to find up-to-date and reliable pandemic information from federal, state and local public health sources.
<input type="checkbox"/>	<input type="checkbox"/>	<input type="checkbox"/>	Disseminate information about the LEA's pandemic influenza preparedness and response plan (e.g., continuity of instruction, community containment measures).
<input type="checkbox"/>	<input type="checkbox"/>	<input type="checkbox"/>	Disseminate information from public health sources covering routine infection control (e.g., hand hygiene, cough/sneeze etiquette), pandemic influenza fundamentals (e.g., signs and symptoms of influenza, modes of transmission) as well as personal and family protection and response strategies (e.g., guidance for the at-home care of ill students and family members).
<input type="checkbox"/>	<input type="checkbox"/>	<input type="checkbox"/>	Anticipate the potential fear and anxiety of staff, students, and families as a result of rumors and misinformation and plan communications accordingly.



## NYSDOH COVID-19 In-Person Decision Making Flowchart for Student Attendance

### Can My Child Go To School Today?



Report absences, symptoms, and positive COVID-19 test results to your child's school

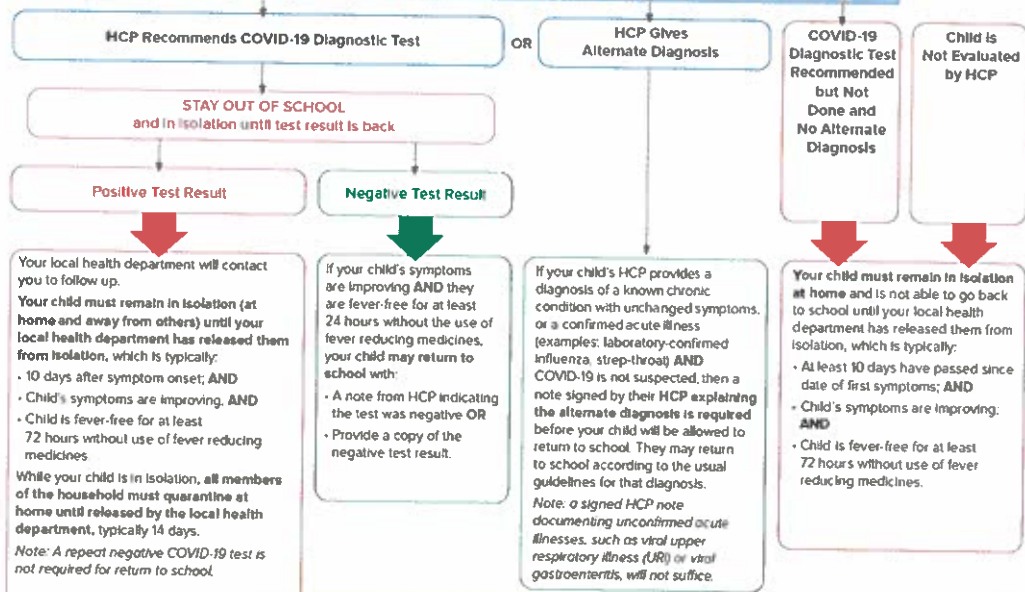
### SEEK IMMEDIATE MEDICAL CARE IF YOUR CHILD HAS:

- Trouble breathing or is breathing very quickly
- Prolonged fever
- Is too sick to drink fluids
- Severe abdominal pain, diarrhea or vomiting
- Change in skin color - becoming pale, patchy and/or blue
- Racing heart or chest pain
- Decreased urine output
- Lethargy, irritability, or confusion

September 2020 | A-1

## My child has COVID-19 symptoms. When can they go back to school?

### HEALTHCARE PROVIDER (HCP) EVALUATION FOR COVID-19 (can be in-person or by video/telephone as determined by HCP)



COVID-19 diagnostic testing includes molecular (e.g., PCR) or antigen testing for SARS-CoV-2, the virus that causes COVID-19. Diagnostic testing may be performed with a nasopharyngeal swab, nasal swab, or saliva sample, as ordered by the health care provider and per laboratory specifications. At times, a negative antigen test will need to be followed up with a confirmatory molecular test. Serology (antibody testing) cannot be used to rule in or out acute COVID-19.

September 2020 | A-2



## NYSDOH COVID-19 In-Person Decision Making Flowsheet for Staff To Go To Work

### Can I Go to Work at the School Today?

In the past 10 days, have you been tested for the virus that causes COVID-19, also known as SARS-CoV-2?

**YES**

Was the test result **positive** OR are you still waiting for the result?

**YES**

You **cannot** go to work at the school today and must stay in isolation (at home and away from others) until your test results are back and are **negative** OR if **positive**, the local health department has released you from isolation.

In the last 14 days, have you:

- Traveled internationally to a **CDC level 2 or 3 COVID-19** related travel health notice country; or
- Traveled to a state or territory on the **NYS Travel Advisory List**; or
- Been designated a contact of a person who tested positive for COVID-19 by a local health department?

**NO**

**YES**

You **cannot** go to work at the school today. If you have had any of these exposures, you must stay at home until your local health department releases you from quarantine, at least 14 days from the date of your last exposure. A negative diagnostic COVID-19 test does not change the 14-day quarantine requirement. School staff are not essential workers and must quarantine.

Do you currently have (or have had in the last 10 days) one or more of these new or worsening symptoms?

- A temperature greater than or equal to 100.0° F (37.8° C)
- Feel feverish or have chills
- Cough
- Loss of taste or smell
- Fatigue/feeling of tiredness
- Sore throat
- Shortness of breath or trouble breathing
- Nausea, vomiting, diarrhea
- Muscle pain or body aches
- Headaches
- Nasal congestion/runny nose

**NO**

**YES**

You **cannot** go to work at the school today. You should be assessed by your health care provider (HCP). Call your HCP before going to any in-person visits to tell them about your COVID-19 symptoms. If you do not have a health care provider, call your local health department.

**NO**

You **can** go to work at the school today! Make sure you wear a face covering or face mask, practice social distancing, and wash your hands frequently.

Report absences, symptoms, and positive COVID-19 test results to your school.

### SEEK IMMEDIATE MEDICAL CARE IF YOU HAVE:

- Trouble breathing or are breathing very quickly
- Are too sick to drink fluids
- Severe abdominal pain, diarrhea or vomiting
- Change in skin color - becoming pale, patchy and/or blue
- Racing heart or chest pain
- Decreased urine output
- Lethargy, irritability, or confusion

September 2020 | B-1

## I have COVID-19 symptoms. When can I go back to work at the school?

HEALTHCARE PROVIDER (HCP) EVALUATION FOR COVID-19 (can be in-person or by video/telephone as determined by HCP)

HCP Recommends COVID-19 Diagnostic Test

OR

HCP Gives Alternate Diagnosis

COVID-19 Diagnostic Test Recommended but Not Done and No Alternate Diagnosis

NOT Evaluated by HCP

STAY OUT OF SCHOOL and in isolation until test result is back

Positive Test Result

Negative Test Result

Your local health department will contact you to follow up. You must remain in isolation (at home and away from others) until your local health department has released you from isolation, which is typically:

- 10 days after symptom onset; AND
- Your symptoms are improving; AND
- You are fever-free for at least 72 hours without use of fever reducing medicines.

While you are in isolation, all members of the household must quarantine at home until released by the local health department, typically 14 days.

Note: A repeat negative COVID-19 test is not required for return to school.

If your symptoms are improving AND you are fever-free for at least 24 hours without the use of fever reducing medicines, you may return to school with:

- A note from HCP indicating the test was negative OR
- Provide a copy of the negative test result.

If your HCP provides a diagnosis of a known chronic condition with unchanged symptoms, or a confirmed acute illness (examples: laboratory-confirmed influenza, strep-throat) AND COVID-19 is not suspected, then a note signed by your HCP explaining the alternate diagnosis is required before you will be allowed to return to school. You may return to school according to the usual guidelines for that diagnosis.

Note: a signed HCP note documenting unconfirmed acute illnesses, such as viral upper respiratory illness (URI) or viral gastroenteritis, will not suffice.

You must remain in isolation at home and are not able to go back to work at the school until your local health department has released you from isolation, which is typically:

- At least 10 days have passed since date of first symptoms; AND
- Your symptoms are improving; AND
- You are fever-free for at least 72 hours without use of fever reducing medicines.

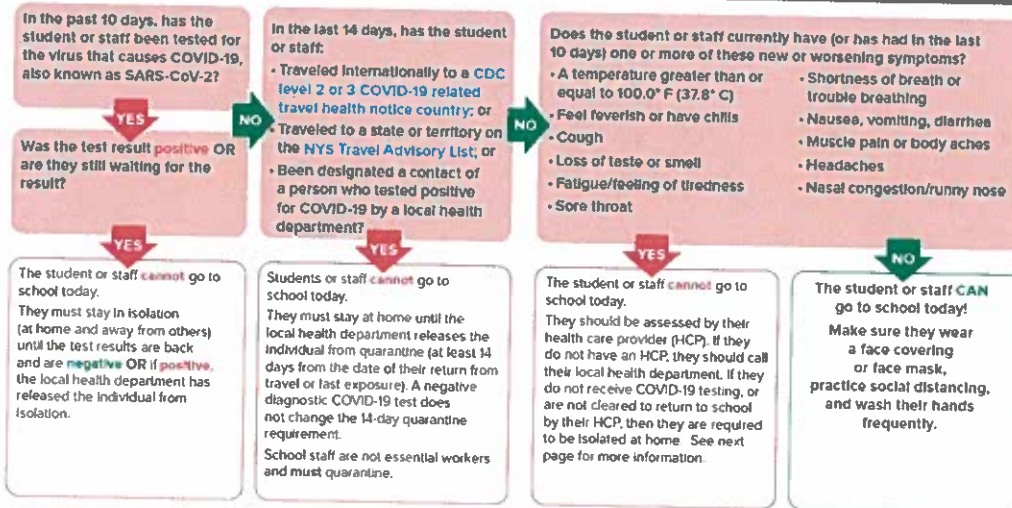
Note: You may not qualify for Paid Sick Leave benefits due to COVID-19 without a confirmed COVID-19 diagnosis.

COVID-19 diagnostic testing includes molecular (e.g. PCR) or antigen testing for SARS-CoV-2, the virus that causes COVID-19. Diagnostic testing may be performed with a nasopharyngeal swab, nasal swab, or saliva sample, as ordered by the health care provider and per laboratory specifications. At times, a negative antigen test will need to be followed up with a confirmatory molecular test. Serology (antibody testing) cannot be used to rule in or out acute COVID-19.

September 2020 | B-2

## NYS DOH COVID-19 Guide for School Administrators and Schools Nurses

### COVID-19 Screening Flowsheet for Students and Staff



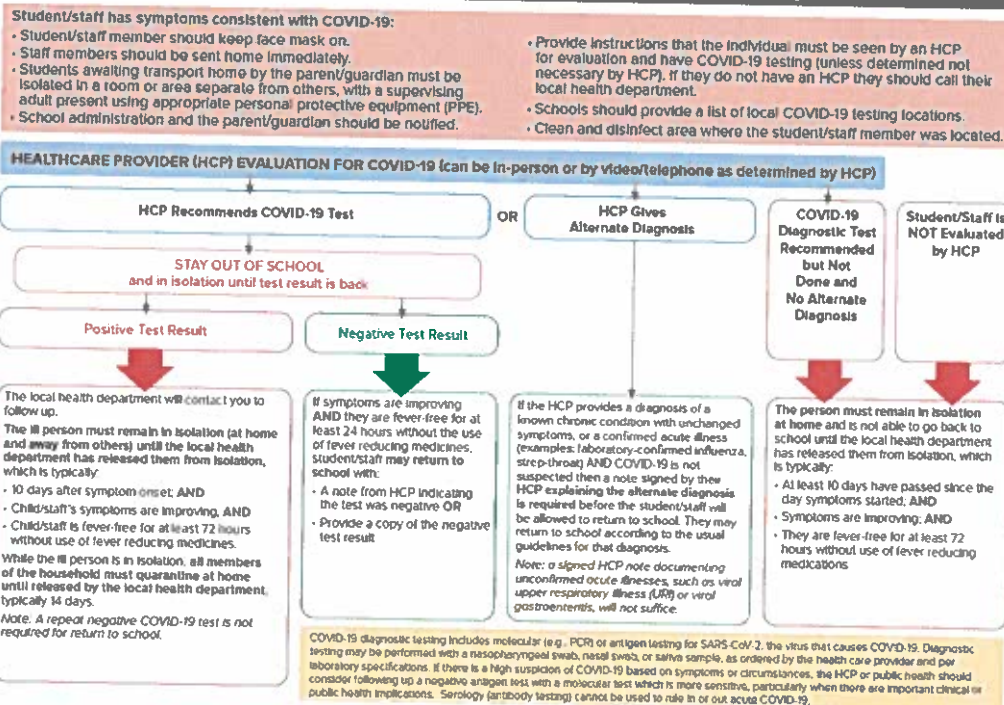
Communicate to your students and staff that they must report absences, symptoms, and positive COVID-19 test results to your school

#### CALL 911 IF A STUDENT OR STAFF HAS:

- Trouble breathing or is breathing very quickly
- Severe abdominal pain, diarrhea or vomiting
- Change in skin color - becoming pale, patchy and/or blue
- Racing heart or chest pain
- Lethargy, irritability, or confusion

September 2020 | C-1

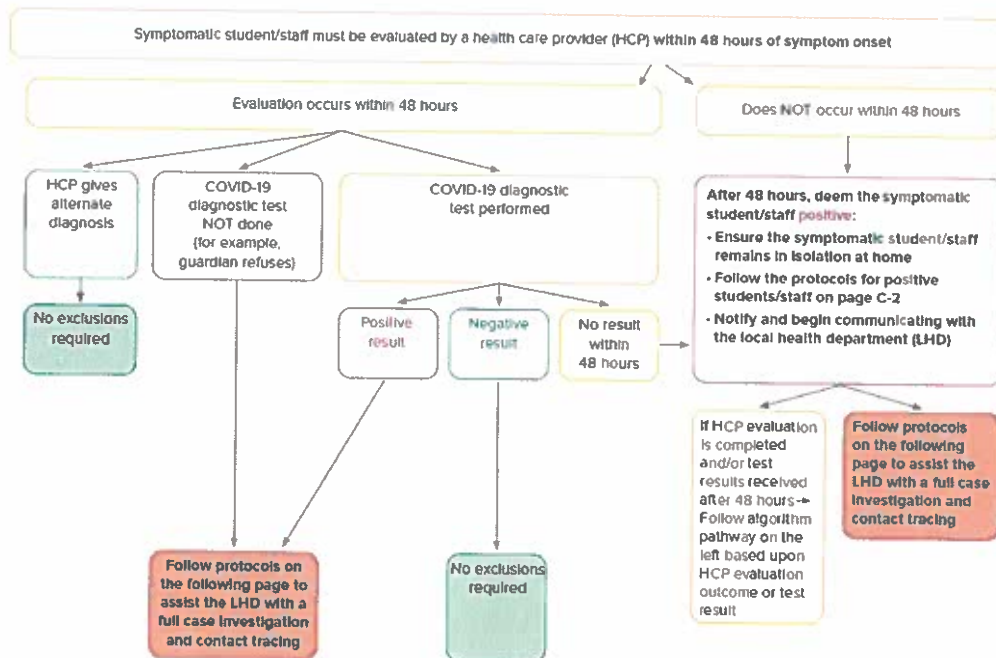
### COVID-19 Flowsheet for Student or Staff with COVID-19 Symptoms



September 2020 | C-2



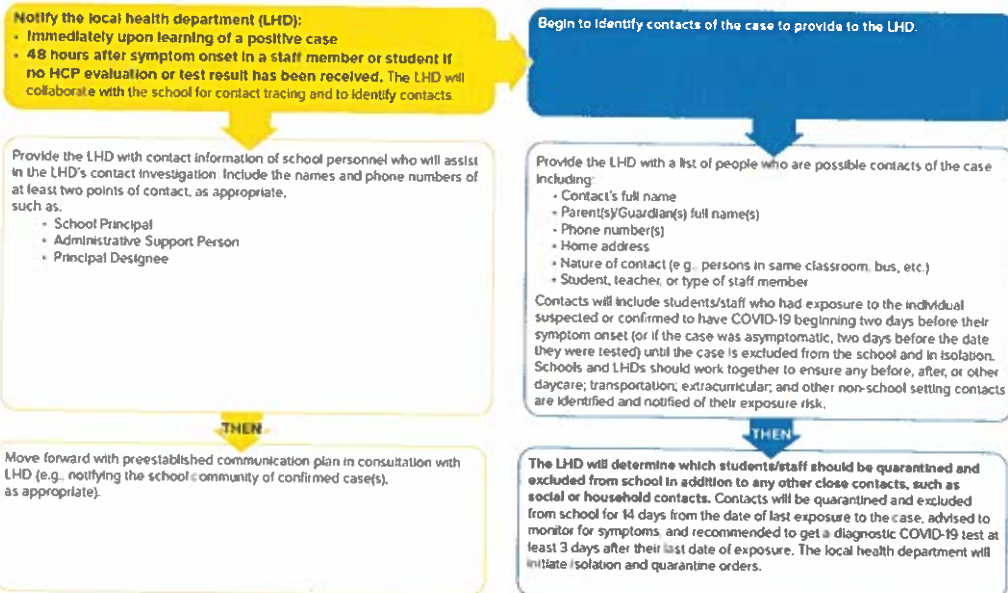
## COVID-19 exclusion protocol for contacts of symptomatic students and staff



September 2020 | C-3



## COVID-19 School and Local Health Department Coordination for Contact Tracing



### When to welcome back affected students/staff:

The LHD will determine when students and staff are released from isolation or quarantine and can return to school. The LHD should communicate to the school a release from isolation or quarantine in order for the student/staff to be welcomed back to the school.

September 2020 | C-4